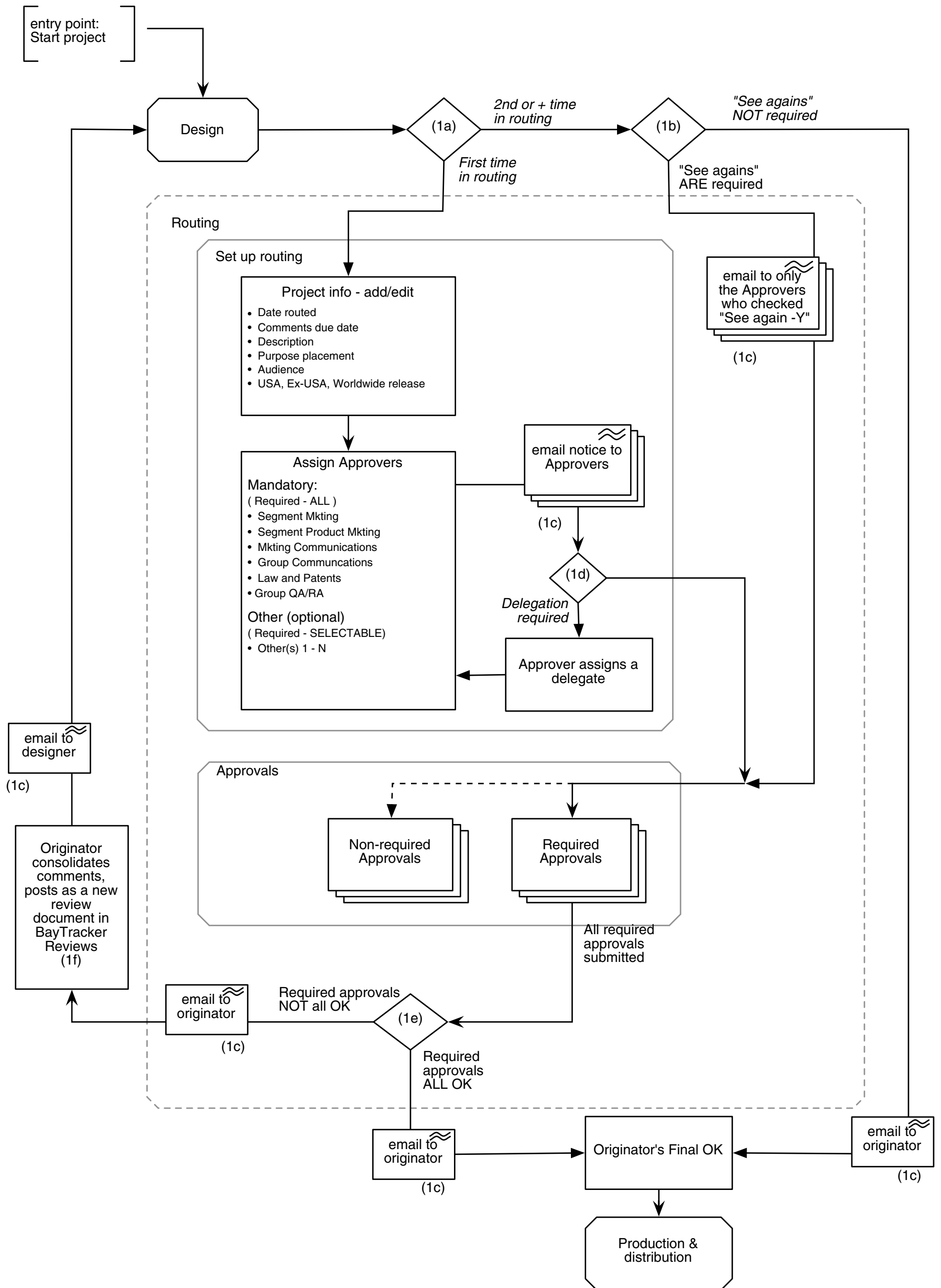


# BayerTracker Routing Module v 1.0

Complete process



## NOTES

**(1a)** If required Project Info not in db, system assumes Project is first time in Routing and opens Project Info add/edit page, otherwise displays Approvals page.

**(1b)** If any Approver(s) checked "Not approved -> See again YES", email is generated to those Approver(s) notifying them to check new version on Approvals page (no email is generated to Approver(s) who OK'd prev version).

**(1c)** All system-generated emails contain links to most relevant content, making team members only "one click away" from their tasks.

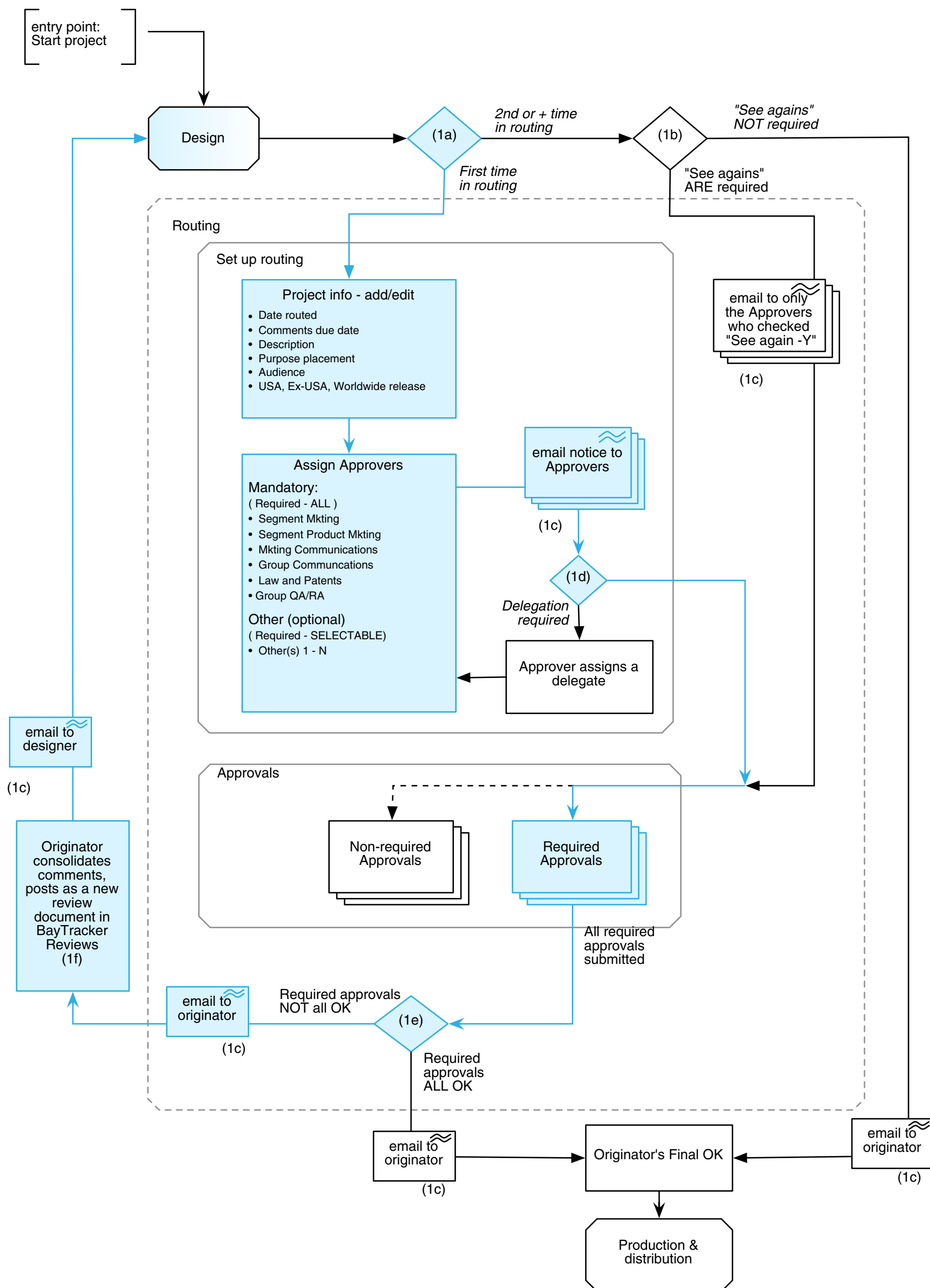
**(1d)** Approver(s) who are unable to participate can delegate someone else, or Originator can assign a different Approver as needed.

**(1e)** Different emails generated to Originator if "All OK" or if "all NOT" OK.

**(1f)** Project returns to Design via same BayerTracker "Add a document" page used in during the initial design/review process.

# BayerTracker Routing Module v 1.0

Scenario 2: No delegating, one or more "Not approved, See again - Yes", project returns with comments to Design



## NOTES

**(1a)** If required Project Info not in db, system assumes Project is first time in Routing and opens Project Info add/edit page, otherwise displays Approvals page.

**(1b)** If any Approvers checked "Not approved -> See again YES", email is generated to those Approver(s) notifying them to check new version on Approvals page (no email is generated to Approvers who OK'd prev version).

**(1c)** All system-generated emails contain links to most relevant content, making team members only "one click away" from their tasks.

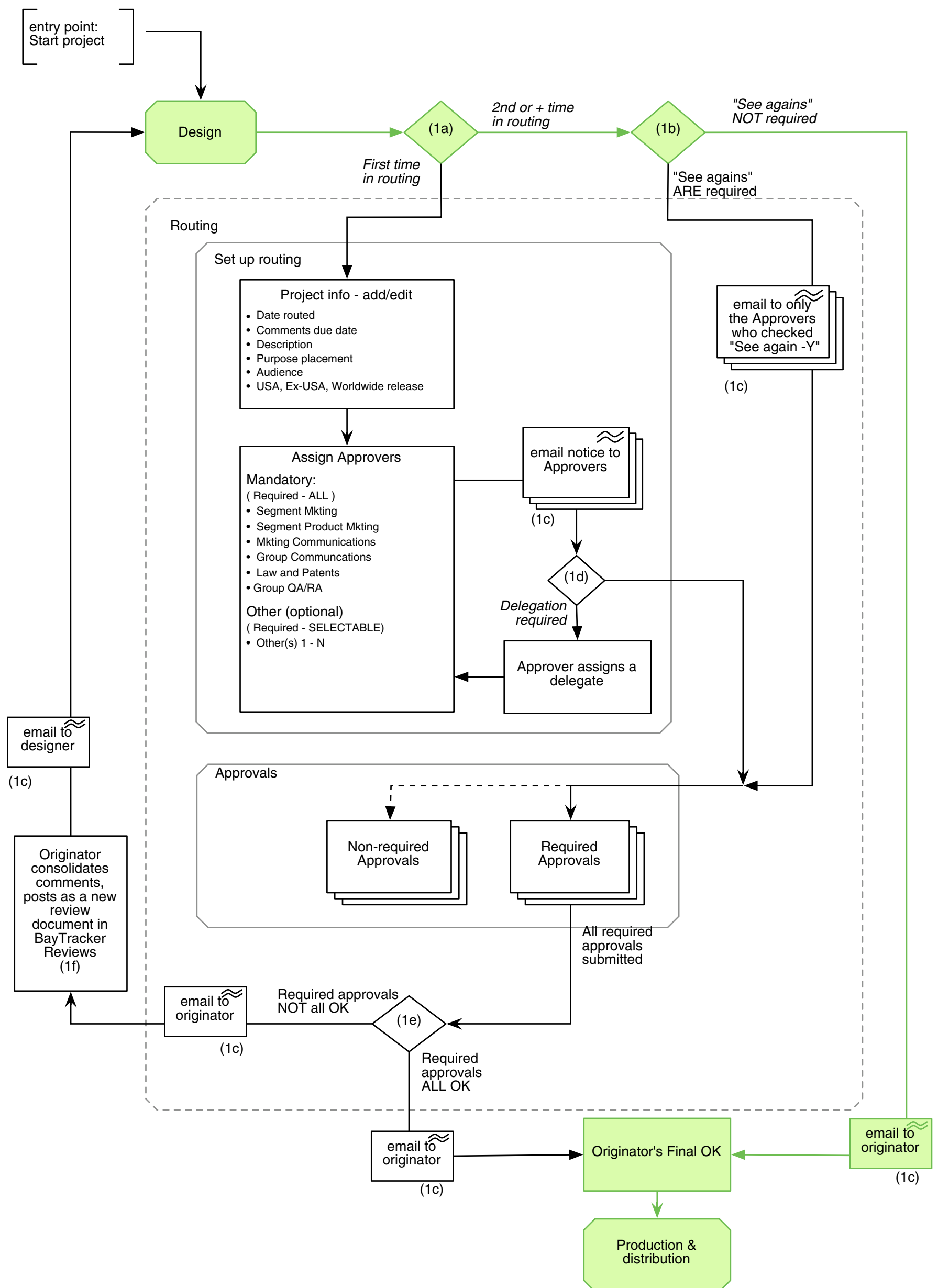
**(1d)** Approvers who are unable to participate can delegate someone else, or Originator can assign a different Approver as needed.

**(1e)** Different emails generated to Originator if "All OK" or if "all NOT" OK.

**(1f)** Project returns to Design via same BayerTracker "Add a document" page used in during the initial design/ review process.

# BayerTracker Routing Module v 1.0

Scenario 3: Project leaves rework after "Not approved, See again - No" in first routing



## NOTES

**(1a)** If required Project Info not in db, system assumes Project is first time in Routing and opens Project Info add/edit page, otherwise displays Approvals page.

**(1b)** If any Approvers checked "Not approved -> See again YES", email is generated to those Approver(s) notifying them to check new version on Approvals page (no email is generated to Approvers who OK'd prev version).

**(1c)** All system-generated emails contain links to most relevant content, making team members only "one click away" from their tasks.

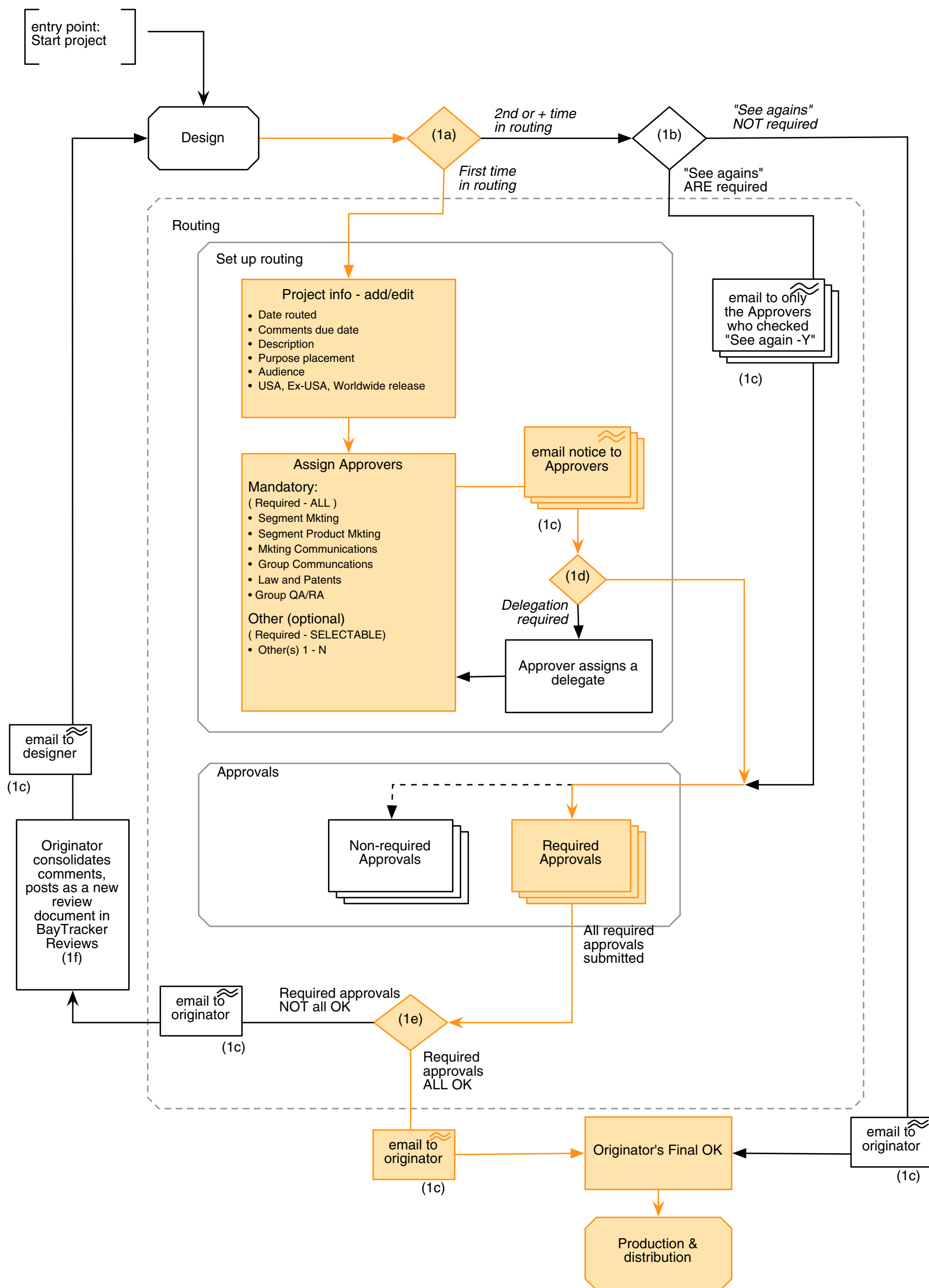
**(1d)** Approvers who are unable to participate can delegate someone else, or Originator can assign a different Approver as needed.

**(1e)** Different emails generated to Originator if "All OK" or if "all NOT" OK.

**(1f)** Project returns to Design via same BayerTracker "Add a document" page used in during the initial design/review process.

# BayerTracker Routing Module v 1.0

Scenario 1: "Clean" passage through Routing, no delegating, all approvals OK on first review



## NOTES

**(1a)** If required Project Info not in db, system assumes Project is first time in Routing and opens Project Info add/edit page, otherwise displays Approvals page.

**(1b)** If any Approvers checked "Not approved -> See again YES", email is generated to those Approver(s) notifying them to check new version on Approvals page (no email is generated to Approvers who OK'd prev version).

**(1c)** All system-generated emails contain links to most relevant content, making team members only "one click away" from their tasks.

**(1d)** Approvers who are unable to participate can delegate someone else, or Originator can assign a different Approver as needed.

**(1e)** Different emails generated to Originator if "All OK" or if "all NOT" OK.

**(1f)** Project returns to Design via same BayerTracker "Add a document" page used in during the initial design/ review process.